



evropský
sociální
fond v ČR



EVROPSKÁ UNIE



MINISTERSTVO ŠKOLSTVÍ,
MLÁDEŽE A TĚLOVÝCHOVY



OP Vzdělávání
pro konkurenceschopnost

INVESTICE DO ROZVOJE VZDĚLÁVÁNÍ

GYMNÁZIUM TÝN NAD VLTAVOU

Autor: Mgr. Lukáš Boček

Datum: 23.1.2013

Ročník: sekunda

Vzdělávací oblast: Jazyk a jazyková komunikace

Vzdělávací obor: Cizí jazyk – angličtina

Tematický okruh: Produktivní řečové dovednosti

Téma: Vztažné věty II.

Klíčová slova: Vztažné věty, who, which, that, interpunkce, gramatika, cvičení

Anotace: Prezentace seznamuje žáky s pravidly tvoření a použití vztažných vět.

Zpracování tohoto DUM bylo financováno z projektu OPVK, výzva 1.5



Relative clauses

defining vs. non-defining

A non-defining relative clause gives us extra information about something. We don't need this information to understand the sentence.

- ▶ I live in London, which has some fantastic parks. (Everybody knows where London is, so 'which has some fantastic parks' is extra information).
- ▶ ***If the clause is non-defining***, choose "which" over "that" and do set the clause off with commas.

fill in a relative pronoun

- 1) I talked to the girl _____ whose ad broken down in front of the shop.
- 2) Mr Richards, _____ is a taxi driver, lives on the corner.
- 3) We often visit our aunt in Norwich _____ is in East Anglia.
- 4) This is the girl _____ comes from Spain.
- 5) That's Peter, the boy _____ has just arrived at the airport.
- 6) Thank you very much for your e-mail _____ was very interesting.
- 7) The man, _____ father is a professor, forgot his umbrella.
- 8) The children, _____ shouted in the street, are not from our school.
- 9) The car, _____ driver is a young man, is from Ireland.
- 10) What did you do with the money _____ your mother lent you?



create relative clauses

A lion is an animal. It is very strong.

A lion _____ .



A novelist is a person. He writes novels.

A novelist _____ .



A bottle opener is a device. It open bottles.

A bottle opener _____ .



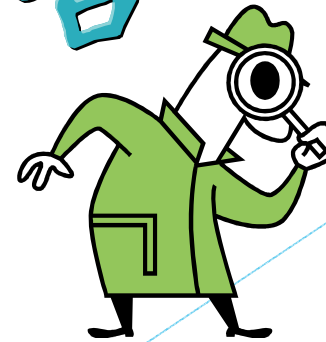
The girl speaks Chinese. Her mother writes poems.

The girl _____ .

喜

A detective is someone. He discovers the truth about crimes.

A detective _____ .



zdroj obrázků

- ▶ MS Klipart

